



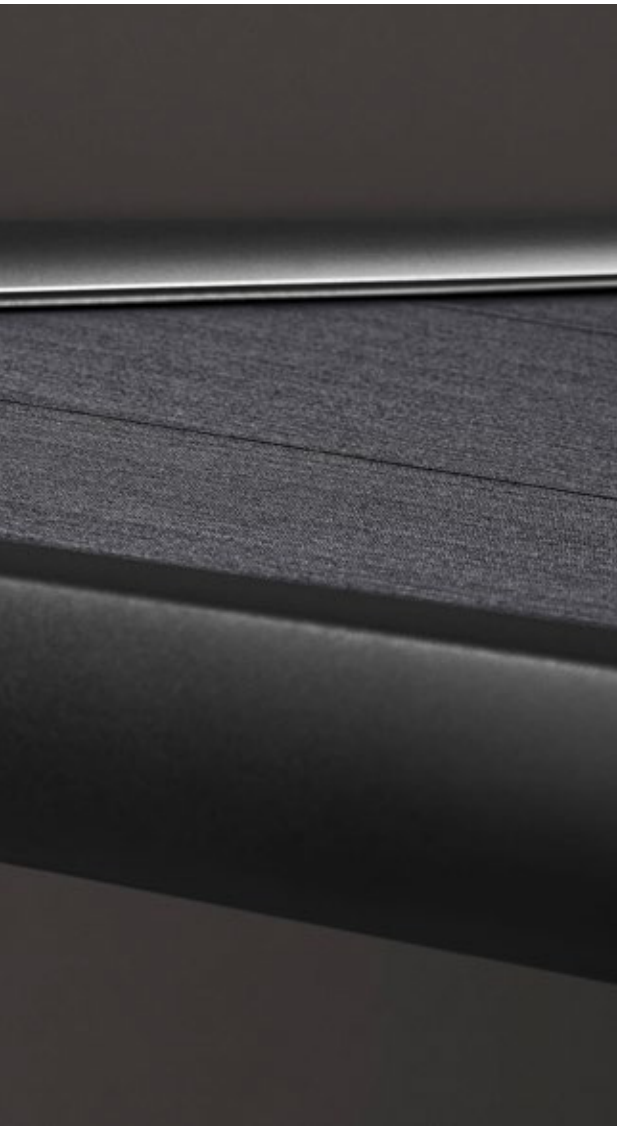
Harness pleasant natural light **and make those special places even more so.**

Designer Awnings for Conservatories, Glass Canopies and Windows





The full details
can be found at markilux.com



The sun smiles down on an awning. Life smiles on you under a markilux.

Enjoying feel-good temperatures

Natural light and the sun's rays enrich the quality of life – both indoors and out – in a way that little else can. No artificial light source comes close. But, depending on the sun's elevation and the season, sometimes we can have too much of a good thing. So that you can enjoy all those precious moments without distraction and discomfort, markilux designer awnings protect conservatories, glass canopies and living areas from the powerful rays of the sun. They ensure a pleasant living environment and reliable protection from glare. markilux textile shading systems are as aesthetically pleasing to the eye as they are sturdy. Right down the line. Award-winning. Outstanding.

markilux designer awnings have received a multitude of awards:



reddot design award
winner 2017

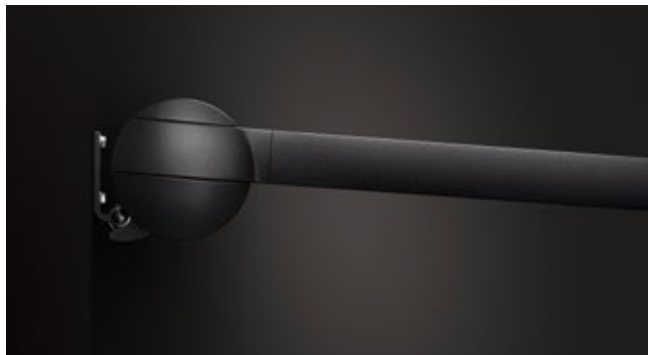
| Brand

| e.g. markilux 779/879

Reduced to the essence: Free. Time.

Premium quality made in Germany.

For over 50 years, markilux has been developing and manufacturing top-quality solar protection solutions. markilux designer awnings are characterised by their first-rate, multi-award-winning design and innovative technology. The production of awning and cover under one roof is the essence of what markilux “Made in Germany” represents, with the aim of making an al fresco lifestyle comfortable, convenient and enjoyable. With markilux, you can turn your favourite spot outdoors into something extra special. **The best under the sun. Create the most alluring shade in the world.**



markilux quality

The best possible materials and a comprehensive quality management system ensure that every markilux designer awning has a long service life. As a company, markilux is certified in accordance with EN ISO 9001 standards.



markilux functionality

markilux combines innovative technologies and smart solutions to create high-end products. A multitude of accessories and operating options make it possible to individualise your markilux designer awning in line with your own personal wishes.





markilux

markilux service

The combination of a brand product with competent advice and professional installation on site makes your solution perfect. Qualified markilux specialist dealers offer a comprehensive service and personal contacts in your vicinity.

Member of  **Rat für Formgebung**
German Design Council



markilux design

It is the perfect combination of form and function that turns an awning into a markilux designer awning. In this respect, markilux relies on its long-standing experience in R&D and design.

Crystal clear:
perfect solar protection.



markilux above-glass and underglass awnings.
A full exposé can be found at markilux.com

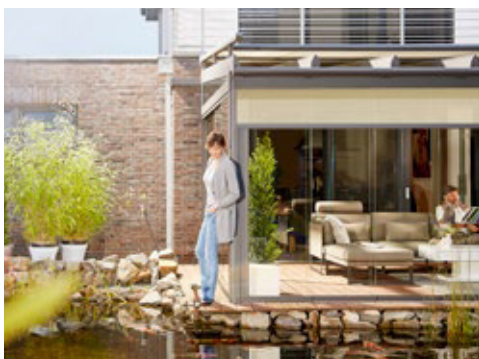


Above-glass and underglass awnings



Textile ambience

markilux offers more than 200 timelessly beautiful patterns in the highest quality – the decision is yours.



Excellent design

markilux has the awning that matches your home perfectly, both outside and inside.



Comfort whatever the weather

Infrared heaters as well as smart operation technology for all markilux glass canopy awnings make the comfort unique and perfect.

Make the most of the weather however it turns out.

Your home. Your markilux.

Would you like to shade your conservatory in a stylish manner? Are you looking for an awning for your glass canopy which unites impressive functionality and attractive design?

Above glass awnings from markilux provide effective heat protection: the sun's rays are caught by the cover before they enter the conservatory. The full room height remains available. If you opt for an **underglass awning**, the cover is perfectly protected from the wind and weather and lighting options cleverly highlight your favourite spot.



Perfect solutions

Not possible? Of course they are. Together with your markilux specialist dealer you will find the perfect solution for every situation.

This is what we mean by a successful up-grade.

A magnificent design that casts its shade wide

The perfect solar shading solution for glass canopies and conservatories. The high-grade above-glass awning markilux 7800 with classic, angular cassette design integrates itself perfectly into the minimalist, modern architectural building style of today. The sophisticated, long-proven tensioning system and optional markilux tracfix system provide excellent cover tension – even at larger widths and extensions.



mx_7800

Show the sun its limits. The above-glass awning markilux 7800 protects your favourite sitting area from direct sunlight and reduces the build up of heat.

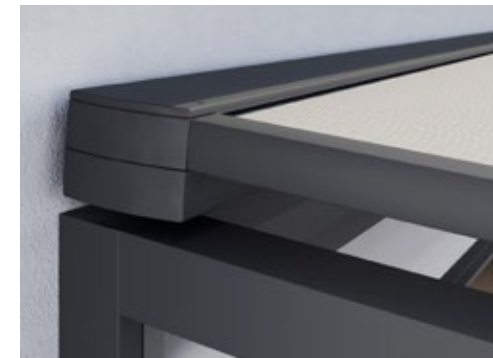


MX_7800



On the outside square and chunky. On the inside nicely rounded off.

The design: fantastic. The technology: reliable. Shade your conservatory of up to 700 × 450 cm or 500 × 700 cm with a single awning cover of your choice – or much larger areas using a coupled awning.



In perfect harmony with one another

The classic, angular cassette design, 200 × 160 mm, harmoniously matches the modern shape of your conservatory.



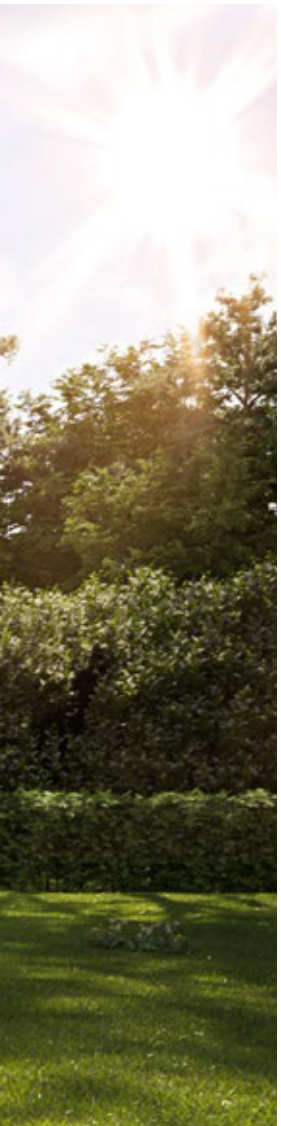
Reliable cover guidance

The markilux tracfix system closes the gap between the guide track and the cover and maintains optimum cover tension.



mx_8800

Excellent solar protection for up to 36 m² with a single cover.
Even larger glass surfaces can easily be shaded with a coupled awning.



Once on top. Always on top.

Enjoy life in your conservatory even on the hottest of days

Your markilux above-glass awning reflects glaring sunlight, UV light as well as a considerable proportion of heat radiation and at the same time immerses your conservatory in pleasant natural daylight. Heat remains outside while you can properly enjoy being inside. For large areas of glass – whether classic or hipped roofs – enjoy pleasant temperatures and create your very own dream conservatory with this round cassette awning.



Excellent design

Elegant and functional. The full cassette, Ø 187 mm, protects the cover in all weathers. Maximum awning width × projection: 700 × 450 cm or 500 × 700 cm.

mx_8850

Perfect for hipped roof conservatories: the lateral guide tracks can be indented by up to 100 cm.





mx_770

Exceptionally compact at only 125 × 125 mm, the square full cassette completely protects the awning cover.



mx_870

With a diameter of just 130 mm, the round cassette harmoniously nestles against the conservatory and provides all-round protection to the retracted cover.



A well-rounded affair. Even when square.

With the small above-glass awnings markilux 770 and 870, shade areas of up to 450 × 400 cm in style and enjoy the convenience and quality of markilux for many years to come.

mx_770 | 870



Big impact. Small format.



Square. Practical. Unobtrusive.

Both the square above-glass markilux 770 awning and its round counterpart are quiet. Noise-reducing closing guides ensure the awning retracts with the minimum of noise.



reddot design award
winner 2017

Shade at its core. Illumination on the patio.

Design in the best light

The clean lines of the markilux 679 team up elegantly with those of your patio canopy, creating a harmonious unit. Acting as genuine solar protection during the day, this underglass awning shows its dazzling appearance in the evening. The LED Line with warm white and coloured lighting is perfectly integrated into the cassette or guide tracks and can be controlled intuitively by app. markilux 679 – the ideal way to illuminate any and every patio.



markilux shadeplus

The optional awning cover offers protection from the sun when it is low in the sky as well as prying eyes. It is perfectly integrated into the front profile.



mx_679



Under glass. Ultra happy.

Enjoying your own privacy under a protective glass roof – and perfect shade up to 600 × 500 cm or 500 × 600 cm with just one stylish awning cover.



Clean lines. Clear function.

The robust full cassette attractively, elegantly and simply protects the awning cover, 205 × 160 mm.



Illuminates your favourite places in the garden

During the course of the evening, the markilux 679 shimmers and creates a wide variety of colour moods on the patio.



MX_779

Compact square full cassette, 125 × 125 mm, for those who prefer clean lines in their design.



MX_879

Attractive round full cassette for those who love flowing lines, Ø 130 mm.



Lovingly shaded. Perfect staging.

Protecting your favourite spot from the sun up to a size of 600 × 450 cm or 400 × 600 cm with an awning cover and showcasing it perfectly with numerous lighting options in the evening: no problem with an underglass awning from markilux.

MX_779 | 879

Cosy and intimate. Under glass. A brilliant solution.

In people's minds and above their heads

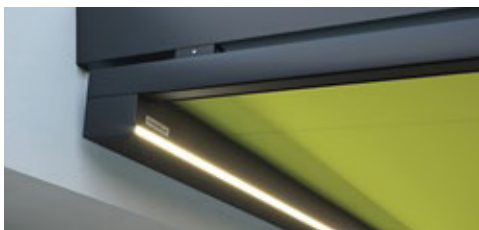
Spend the day outside in your own garden below a protective canopy. markilux designer awnings promise the best protection from too much sun and help create your very own cosy outdoor area. The compact underglass awnings markilux 779 and 879 blend in harmoniously with the patio roof. In turn, robust gas pressure springs keep the awning cover under tension. Numerous lighting options – also with smart control – will provide the perfect ambience in the evening.



reddot design award
winner 2017

markilux shadeplus complements your underglass awning

The perfect shading add-on for patio roofs – in keeping with clear design
“made in Germany” – integrated in the front profile of the underglass awning.



LED Line in the cassette

More than a highlight: the LED Line in the square full cassettes beautifully illuminates your patio.



LED Line attached to the guide tracks

Energy efficient, stylish and, like all lighting modules, conveniently dimmable by means of remote control. If desired, also available in the light bar (mx 779/879).



LED Spots attached to the light bar

Put your favourite spot skilfully in the limelight and enjoy the evening in a pleasantly lit atmosphere (mx 779/879). They can be dimmed and pivoted.



mx_679 | mx_779 | mx_879 Lighting options



Evening is the time for those little highlights

Discover the possibilities at your local markilux specialist dealer's, with the free markilux AR App and at [markilux.com](https://www.markilux.com)



Where there is shade, there is now mx light.

The coloured LED lighting option mx light illuminates the outdoor area in your very own feel-good atmosphere. Every lighting scenario can be configured easily and individually with the app.

However you look at it:
trendsetting.



Make your house stand out.
Find the options available to you at markilux.com



Designer blinds and awnings for windows



Diversity in textiles

Whether opaque or transparent, discreetly patterned or with bright colours: in our markilux collection one, you will find just the right awning cover to create your own personal sunshine.

Your own personal sunshine. Good reasons. Innumerable possibilities.

Textile shading provides improved living comfort

markilux designer blinds and awnings for windows offer numerous advantages in comparison with standard shading systems. They offer effective protection against the often blinding rays of the sun and prevent the room from heating up, thus maintaining a pleasant living environment. markilux designer awnings immerse your room in softly adjusted daylight without blocking out the sun entirely. Transparent awning fabrics allow a clear view outside whilst shielding you from prying eyes. Ease of operation or integration into a home automation system is a given at markilux.



Effective solar protection

markilux vertical roller blinds provide optimum UV protection and transform the sun's sometimes blinding rays into soft ambient lighting.



Optimum protection from prying eyes

markilux awning covers protect you from prying eyes without spoiling the view.



Models and options

As individual as your desires: choose the markilux with the style and accessories that match your home.



markilux 620 sundrive

No power supply available or desired at the window? The integrated solar module with powerful accumulator which drives the radio-controlled motor is available as an optional extra.



| markilux 776/876

Large formats. A small matter.

markilux vertical cassette blinds are available up to 600 cm width or extension, depending on the model. The sturdy full cassette awnings are custom-fit, dimensionally stable and tested for durability.

mx_ 620 | 625 | 710 | 776 | 876

markilux vertical cassette blinds. My house. My style. My markilux.

As individual as your home

Those who value stylish furnishings will definitely not enter into any compromise as far as their view outside is concerned. A markilux vertical cassette roller blind is the perfect symbiosis of functionality and design. When extended, the perfectly tensioned cover offers ideal protection from the sun, glare and inquisitive glances. When retracted, it is protected both from the weather and dirt in the fully enclosed cassette.



Perfect cover tension

markilux vertical cassette blinds are equipped with special gas piston technology, depending on the model. This gives the cover perfect tension even in larger units and under greater wind loads.

Fixture type



Face fixture

The frame shape that matches your windows.



Stand-off fixture

With brackets and decorative covers for a perfect overall appearance.



Reveal fixture

Discreet and unobtrusive.



markilux tracfix

The lateral cover guidance system without a gap between the awning/blind cover and the guide track: guarantees a more attractive overall appearance and better wind stability.

Models



MX_620

Cassette 95 × 110 mm, cover guidance by way of guide tracks, optionally with markilux sundrive, the integrated solar module for operating the remote-controlled motor. Maximum awning dimensions 400 × 300 cm or 300 × 400 cm.



MX_625

Cassette 125 × 135 mm, cover guidance by way of guide tracks. Maximum awning dimensions 600 × 350 cm or 550 × 400 cm.



MX_710

Cassette 95 × 95 mm, cover guidance by way of stainless steel cables. Maximum awning dimensions 500 × 350 cm.



MX_776

Cassette 125 × 125 mm, cover guidance by way of guide tracks. Maximum awning dimensions 600 × 350 cm or 400 × 600 cm.



MX_876

Cassette Ø 130 mm, cover guidance by way of guide tracks. Maximum awning dimensions 600 × 350 cm or 400 × 600 cm.

markilux
drop-arm cassette awning
max. 700 × 250 cm

Cover guide system
drop arm (80/100/120/150 cm)

Cover tension system
stainless steel gas piston

Fixture type
face/top/reveal
optionally: accro bars

Wind resistance class 2
wind speed, Beaufort force 5
→ 28 – 37 km/h; 17 – 23 mph



Classic awning. Compact cassette.

A classic when extended, an eye-catcher and gem on a building. When retracted, the compact cassette protects the cover and the awning merges discreetly with the architecture.

mx_730



markilux drop-arm cassette awning. Exceptional. And eye-catching.

Great solar protection and great visibility

A cassette awning with classic appearance that protects against the sun and still permits a clear view outside. The drop arms with gas pistons tension the cover in an angle of up to 140° to the window. The front profile with spring-loaded closing mechanism ensures the profile finishes tight against the underside of the cassette. Telescopic accro bars are optionally available for installation on a balcony.



mx_730

Angular cassette, 95 × 95 mm, suitable for face/top/reveal installation or fixed with accro bars.



Good prospects for the best shade

Protection from the sun with a view outside at the same time: with the markilux 730 you will enjoy both.

mx_740

markilux marquisolette.

The successful combination
of light and shade.

The ideal combination of vertical blind and drop-arm cassette awning

In the upper section, the solar and visual protection runs vertically, in the lower section the amount of incoming light can be determined in a flexible manner depending on the position of the drop arms. The height of the area to be shaded vertically can be set to fulfil your individual requirements in terms of maximum shade and a perfect view outside.



mx_740

Square cassette, 95 × 95 mm, as standard with a cover profile:
looks tidy and protects the cover when retracted.





markilux Marquisolette
max. 300 × 300 cm

Cover guide system
guide rail
plus drop arm (60 cm)

Cover tension system
stainless steel gas piston

Fixture type
face / reveal

Wind resistance class 2
wind speed, Beaufort force 5
→ 28 – 37 km/h; 17 – 23 mph

Looks and technology elegantly combined

Angled guide rail with high-grade slide mechanism. Drop arms with stainless steel gas piston technology and markilux windlock mechanism.

markilux triangular blind

max. 400 × 500 cm

Cover guide system

guide tracks plus tensioning cords

Cover tension system

gas pistons in the track

Fixture type

stand-off

Wind resistance class 2

wind speed, Beaufort force 5

→ 28 – 37 km/h; 17 – 23 mph



You know what you want

We bring your vision to life. Talk to your markilux specialist dealer and allow yourself to be inspired at [markilux.com](https://www.markilux.com)

mx_893

markilux triangular blind. The pinnacle of efficiency.

The solar protection and privacy solution for unconventional windows

Triangular windows or skylights are fitted with made-to-measure solar protection from markilux. The sturdy full cassette protects the cover from soiling. The tensioning system which uses highly tear-resistant tensioning cords and integrated gas pistons ensures optimum cover stability at every stage of extension.



mx_893

Round cassette, Ø 115 mm, with brush seal at cover exit point for better cover protection.

The clever system offering bespoke solutions

Patented clip-on fixture of the guide tracks to the brackets and the wide range of fixture options permit interior, exterior, vertical, horizontal and diagonal installation.



Vertical protection for glass roofs

The vertical cassette roller blinds from markilux provide protection from the sun when it is low in the sky as well as from prying eyes.



Vertical protection on pergolas

The extra feature for more protection from the sun, wind and prying eyes offers more comfort and well-being late into the night.



All-round protection with the markilux markant

With vertical cassette blinds on the markilux markant, you can create your very own private space outdoors.

The best prospects. For all balcony fans.

markilux designer roller blinds for windows. Even without windows.

So that you can enjoy those precious moments outdoors without restriction, you should be able to sit protected from strong sunlight, wind and unwanted glances. The top-quality vertical blinds from markilux are as robust as they are attractive – and also perfectly suited for balconies, glass roofs und awning systems. Right down the line. Award-winning. Good.



markilux drop-arm awnings

The freely elective angle and positioning of the drop arms allows you to decide exactly how much sun is good for you and how much of a view you wish to retain.




markilux vertical cassette blinds

The cover is completely protected inside the cassette when the awning is retracted. When vertically extended, it protects your favourite spot on the balcony perfectly.



markilux marquisolette

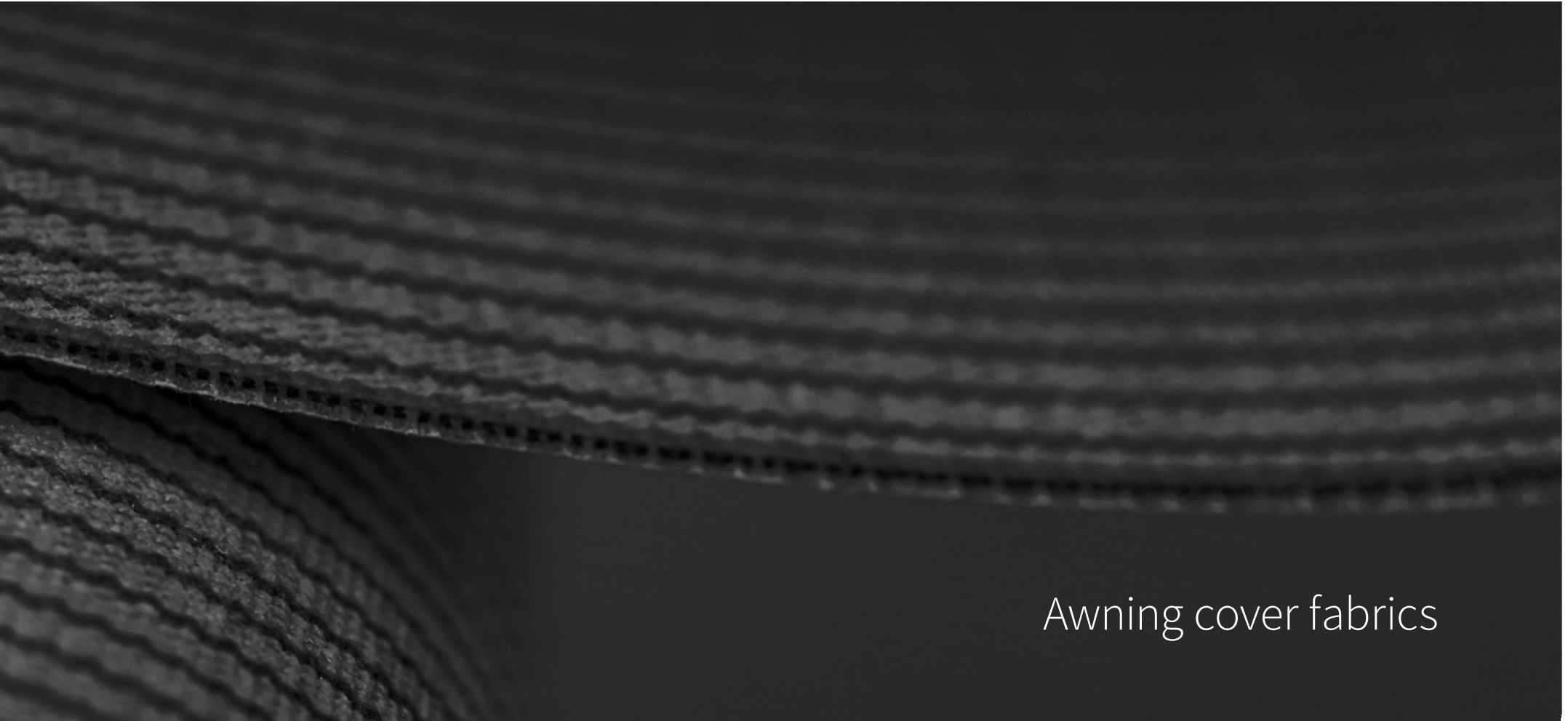
In the upper section, the sun and privacy protection runs vertically; in the lower section, the amount of light and the view can be determined by how far the arms are allowed to drop.



Exquisite fabrics
in the most beautiful
of shades.



The most beautiful fabric between heaven and earth
discover yours with the markilux awning fabric finder.

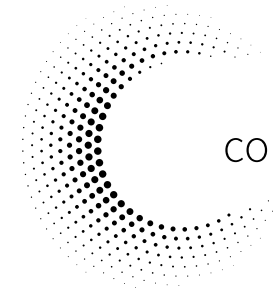


Awning cover fabrics



markilux collection one – One collection, endless ideas.

Choose your own favourite pattern from a number of different colour families. When making your selection allow yourself to be inspired, enthused and advised by a markilux specialist dealer near you ...



collection one

The most beautiful fabric between heaven and earth.

Our unique covers help to create a special ambience

The colour and quality of the awning fabric are what help make the ambience on your patio something special. Colour nuances, patterns and textures succeed in creating that uniquely special effect by virtue of their brightness and hue. As a leading manufacturer of high-grade awning fabrics with 50 years of experience in the manufacture of textiles, markilux offers an unparalleled variety. The markilux textile design team is constantly developing new patterns in line with the latest trends, which are nevertheless characterised by their timeless appeal. Among the more than 200 patterns in thematically coordinated colour families, you are bound to find your very own and most beautiful fabric between heaven and earth.



markilux AR App and Awning Cover Finder

markilux awning fabrics are designed, manufactured and tested in the markilux facility in Germany. Find your own personal favourite amongst the more than 200 cover patterns in the showroom of your markilux specialist dealer, by using the markilux AR App or with the **Awning Cover Finder** at [markilux.com](https://www.markilux.com)

Self-cleaning effect

Water droplets pick up dirt particles and run off the awning cover taking dirt with them (the awning must be set at a pitch of at least 14°), ensuring you can enjoy your beautiful fabric for a long time to come.



Bonded awning covers

Panel joints bonded together ultrasonically ensure a consistent, unobtrusive appearance. Their excellent resistance to water, light and fluctuations in temperature ensures that the service life of the cover is extended substantially.



Light and weather resistance and resistance to fading

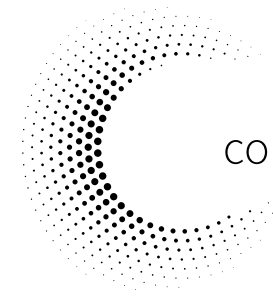
High-tech yarns dyed right to the core and the high-grade snc finish developed in house guarantee the most stunning shade in which to relax.



**STANDARD
100**

A96-0071
Hohenstein HTTI

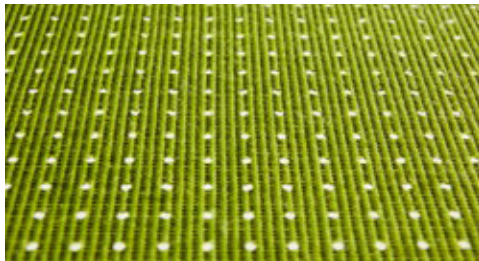
Detailed information about the typical properties of awning fabrics is available from your markilux specialist dealer and in the current markilux awning fabric brochure.



collection one

markilux awning covers. Quality – Made in Germany.

markilux specials



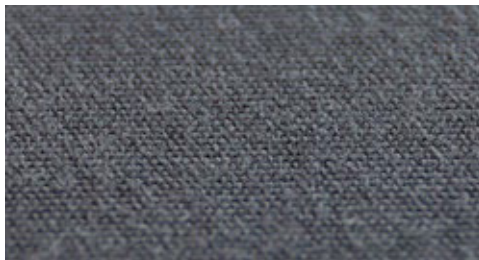
transolair

This sunvas fabric with special perforation technique stands for impressive transparency as well as good light and air permeability. It guarantees an exchange of air between the cover and the glass, thus effectively reducing the build-up of a heat cushion.



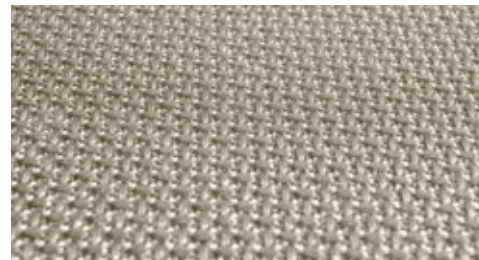
perfortex

Ideal for conservatories. Gaps in the warp make this sunsilk material permeable to both water and air.



perla FR

This highly flame-retardant and waterproof (for purpose) sunvas material meets extremely exacting fire safety regulations.



vuscreen ALU

Solar protection with climate protection. Good view to the outside with a better climate in the room thanks to the aluminium particles on the high-tech fabric.

Functionality can be so beautiful

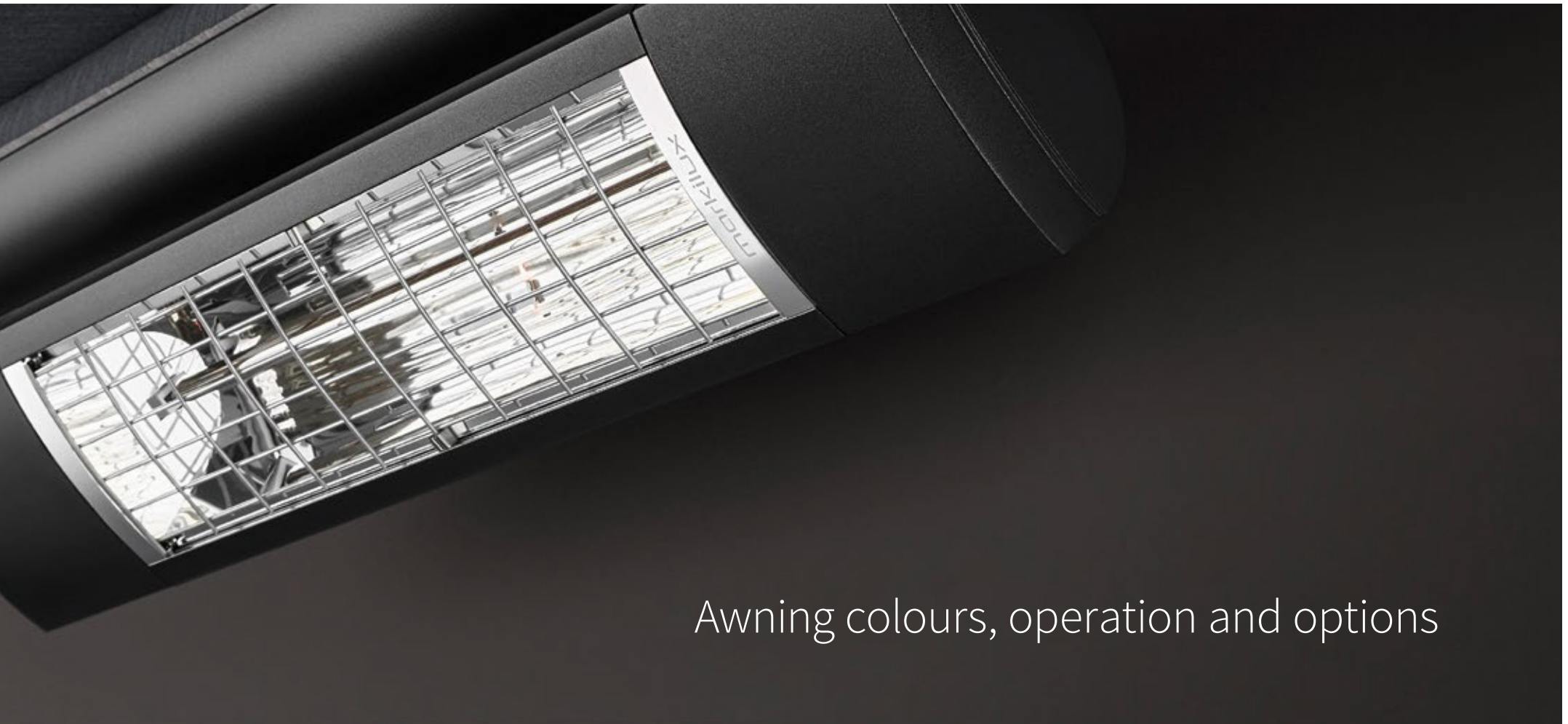
markilux leaves nothing to chance when it comes to making awning covers. We add a final finishing flourish to the fabric qualities sunsilk and sunvas with a special formula developed in house. This gives these awning covers particularly high longevity and the necessary resistance to dirt and the weather.

markilux awning covers made of sunsilk, sunvas and sunbow usually offer the highest possible UV protection for textiles with UPF 50+. This means that your skin's own system of protection is enhanced by a factor of more than 50. This allows you to enjoy sunny days for longer, without putting your health at risk.

Certified in accordance with Oeko-Tex standard 100, all markilux awning covers are guaranteed free from harmful dyes and chemicals.

The background is a dark, textured surface, possibly a book cover or a piece of fabric. A diagonal line runs from the bottom left towards the top right. In the bottom right corner, there is a curved, metallic-looking object, possibly a hinge or a part of a device.

Beauty lies not in size,
but in attention to detail.

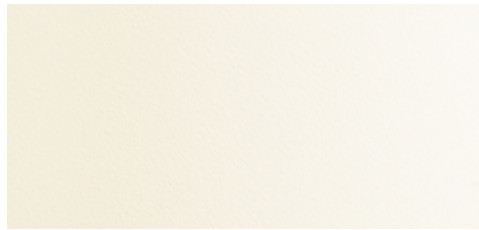


Awning colours, operation and options



Traffic white

RAL 9016



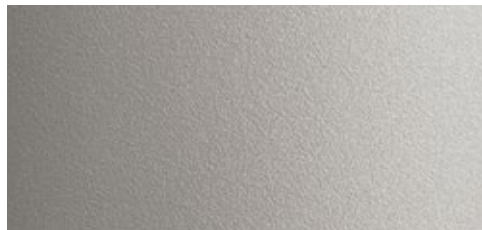
Off-white textured finish

5233



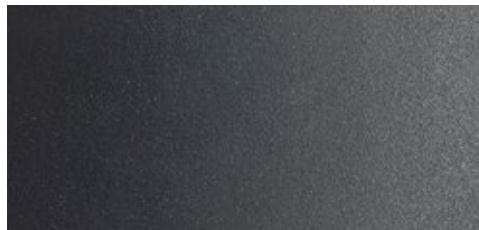
Metallic aluminium

RAL 9006



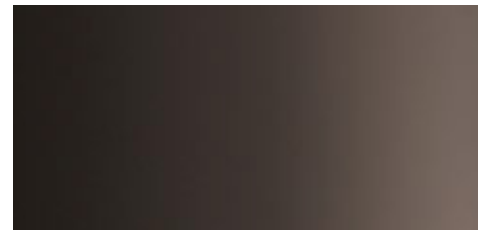
Stone grey metallic

5215



Anthracite metallic

5204



Grey brown

similar to RAL 8019



Havana brown textured finish

5229



RAL colour of your own choice

© RALBonn 2024





Sounds perfect. Tone in tone.

markilux awning colours

The awning frame colour complements and enhances the colour of the fabric and creates a perfect link to the architectural surroundings. From a variety of shades of white through to the timelessly elegant anthracite, a broad range of colours is available to you. And if you want to create your own particular colour scheme? No problem! We will gladly manufacture your dream awning in your own personal shade.

Our high-grade powder coating finish is guaranteed for any awning colour you choose.

Matching every architectural style and customer demand.

All markilux awning colours are available without a surcharge.

We would be happy to produce non-standard RAL colours on request.

Make it easy on yourself. And comfortable.

markilux ease of operation

Fulfils the highest expectations and can be used in any weather conditions. The choice is yours: manual operation, hard-wired motor or radio-controlled motor with remote control are all possible on most models. And if you wish, light, wind and rain sensors will control your markilux designer awning according to the prevailing weather conditions. Alternatively, you simply operate it at home yourself and this can even be done when you're out and about via your smartphone or tablet.

Your markilux specialist dealer is at your disposal should you have any queries and will provide you with details on how you can connect several individual units together and operate them with the touch of a button.



markilux



You too will be impressed

markilux offers a broad range of stylish and smart solutions that show your house in the best of lights. Get detailed information and competent advice from your markilux specialist dealer or go to [markilux.com](https://www.markilux.com)



Smart Home

Easily control your designer blind by smartphone or tablet – even when on the move. The smart control function with io technology via the app makes it possible.



Automatic weather controls

With light, wind and rain sensors, your markilux system will react to any change in the weather. In sunny conditions your blinds will extend automatically, and in wind and rain they will retract.



markilux remote control

Perfect protection from the sun, inquisitive glances and glare comfortably at the touch of a button.

Availability depends on the model

More markilux. Fewer compromises.

markilux options and accessories



markilux shadeplus

The ideal addition to the shading options for glass canopies, integrated into the front profile of the markilux 779/879.



Side screen markilux 790

Protects against low-lying sun and wind from the side, as well as stopping prying eyes. Maximum height 250 cm. Maximum extension 450 cm.



Vertical designer roller blinds

Simply shield yourself from inquisitive glances and low-lying sun. Sit protected from the wind and rain. Enjoy the warmth of the day for longer. Adding vertical designer roller blinds from markilux makes your outdoor room perfect – and more private.



silentec motor

Deafeningly quiet. In the markilux 8800, this special motor ensures particularly quiet operation.



markilux infrared heater

Feel the warmth in an instant and enjoy the evening outside for even longer. Either as stand-alone unit (1400 Watt) or installed under your awning (2500 Watt, the latter optionally dimmable in three stages).



markilux LED Spotline

Turn night into day. The elegant light bar in a powder-coated aluminium housing, that can be fitted almost anywhere. The LED Spots can be swivelled and dimmed. Available in two sizes: 180 cm with 3 spotlights and 300 cm with 5 spotlights.



Coupled awnings

An extensive range of brackets allows several units to be installed next to one another – creating XXL shading solutions.



Flush front profile

Completely extended it finishes flush with the guide tracks.



Decorative covers for guide track brackets

Bolt and nut heads disappear. Achieve a perfect overall appearance.

Availability depends on the model

More freedom. More free space.

markilux options and accessories



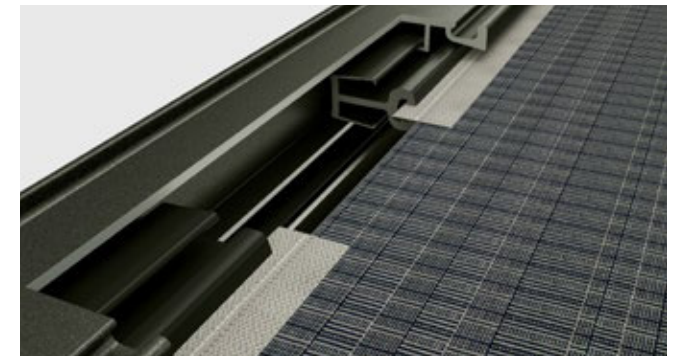
Perfect cover fit

High cover tension is achieved by virtue of two concealed special gas pistons operating independently of one another in the front profile.

Availability depends on the model



markilux



markilux tracfix

One of the many sophisticated features offered by markilux: the lateral cover guidance system without a gap between the awning/ blind cover and the guide track. Gives an overall better appearance and improves wind stability.

markilux panorama window

Wouldn't you like to be able to sit outside below your patio roof, protected from wind and weather, and still be able to enjoy an unobstructed view? For the markilux 776/876 with tracfix, we offer you the markilux panorama window. Maximum dimensions 600 × 300 cm. Maximum height of the panorama window approx. 135 cm.








A clear overview.
Opening up exciting prospects.






Technical specification

markilux Above-Glass Awnings – More effective protection from a build up of heat for conservatories and glass canopies.

	markilux 7800 Page 10	markilux 8800 Page 12	markilux 8850 Page 12	markilux 770 Page 14	markilux 870 Page 14
					
Max. width × extension	700 × 450 cm / 500 × 700 cm	700 × 450 cm / 500 × 700 cm	650 × 400 cm / 500 × 500 cm	450 × 400 cm	450 × 400 cm
with tracfix	600 × 450 cm / 500 × 600 cm	600 × 450 cm / 500 × 600 cm			
Cassette	200 × 160 mm	Ø 187 mm	Ø 187 mm	125 × 125 mm	Ø 130 mm
Operation	hard-wired motor	hard-wired motor	hard-wired motor	hard-wired motor	hard-wired motor
optional	<ul style="list-style-type: none"> ➤ silentec motor ➤ radio-controlled motor ➤ smart home 	<ul style="list-style-type: none"> ➤ silentec motor ➤ radio-controlled motor ➤ smart home 	<ul style="list-style-type: none"> ➤ radio-controlled motor ➤ smart home 	<ul style="list-style-type: none"> ➤ radio-controlled motor ➤ smart home 	<ul style="list-style-type: none"> ➤ radio-controlled motor ➤ smart home
Cover guidance	guide tracks	guide tracks	guide tracks	guide tracks (tracfix)	guide tracks (tracfix)
optional	<ul style="list-style-type: none"> ➤ tracfix 	<ul style="list-style-type: none"> ➤ tracfix 			
Cover tension	gas pistons	gas pistons	gas pistons	gas pistons	gas pistons
Fixture type	above glass	above glass	above glass / hipped roof conservatory	above glass	above glass
Wind resistance class	3	3	2	3	3
Equivalent of Beaufort force → wind speed	6 → 38 – 48 km/h; 24 – 30 mph	6 → 38 – 48 km/h; 24 – 30 mph	5 → 28 – 37 km/h; 17 – 23 mph	6 → 38 – 48 km/h; 24 – 30 mph	6 → 38 – 48 km/h; 24 – 30 mph
Options	<ul style="list-style-type: none"> ➤ coupled awning 	<ul style="list-style-type: none"> ➤ coupled awning 			

markilux Underglass Awnings – Awning cover protected under the glass.

markilux

markilux 679 Page 16	markilux 779 Page 18	markilux 879 Page 18
		
600 × 500 cm / 500 × 600 cm	600 × 450 cm / 400 × 600 cm 600 × 450 cm	600 × 450 cm / 400 × 600 cm 600 × 400 cm
205 × 160 mm	125 × 125 mm	Ø 130 mm
radio-controlled motor	manual operation	manual operation
<ul style="list-style-type: none"> ➤ hard-wired motor ➤ smart home 	<ul style="list-style-type: none"> ➤ hard-wired motor ➤ radio-controlled motor ➤ smart home 	<ul style="list-style-type: none"> ➤ hard-wired motor ➤ radio-controlled motor ➤ smart home
guide tracks (tracfix)	guide tracks	guide tracks
	<ul style="list-style-type: none"> ➤ tracfix 	<ul style="list-style-type: none"> ➤ tracfix
gas pistons	gas pistons	gas pistons
underglass	underglass	underglass
3	2 – 3 depending on size / 3 with tracfix	2 – 3 depending on size / 3 with tracfix
6 → 38 – 48 km/h; 24 – 30 mph	5 – 6 → 28 – 48 km/h; 17 – 30 mph	5 – 6 → 28 – 48 km/h; 17 – 30 mph
<ul style="list-style-type: none"> ➤ LED Line in the cassette and / or guide tracks ➤ shadeplus / drop valance (manual) 	<ul style="list-style-type: none"> ➤ LED Line in the cassette, guide tracks and / or cover support tube ➤ LED spotlights fitted to the cover support tube ➤ shadeplus ➤ cover support tube 	<ul style="list-style-type: none"> ➤ LED Line in the guide tracks and / or cover support tube ➤ LED spotlights fitted to the cover support tube ➤ shadeplus ➤ cover support tube

Awning Configurator



Create the most alluring shade in the world

Configure your markilux designer awning including cover and optional extras at markilux.com

Your markilux specialist dealer will advise you personally on site, will draw up an offer tailored to your requirements and install the product professionally.



markilux Vertical Cassette Blinds

markilux 620

Page 26



markilux 625

Page 26



markilux 710

Page 26



markilux 776

Page 26



markilux 876

Page 26



Max. width × extension	400 × 300 cm	600 × 350 cm	500 × 350 cm	600 × 350 cm	600 × 350 cm
optional	300 × 400 cm	550 × 400 cm		400 × 600 cm	400 × 600 cm
Cassette	95 × 110 mm	125 × 135 mm	95 × 95 mm	125 × 125 mm	Ø 130 mm
Operation	hard-wired motor	hard-wired motor	manual operation	manual operation	manual operation
optional	<ul style="list-style-type: none"> ▶ radio-controlled motor ▶ smart home 	<ul style="list-style-type: none"> ▶ radio-controlled motor ▶ smart home 	<ul style="list-style-type: none"> ▶ hard-wired motor ▶ radio-controlled motor ▶ smart home 	<ul style="list-style-type: none"> ▶ hard-wired motor ▶ radio-controlled motor ▶ smart home 	<ul style="list-style-type: none"> ▶ hard-wired motor ▶ radio-controlled motor ▶ smart home
Cover guidance	guide tracks (tracfix)	guide tracks (tracfix)	stainless steel cable	guide tracks	guide tracks
optional				▶ tracfix	▶ tracfix
Cover tension	gravity	gravity	gravity	gas pistons	gas pistons
Fixture type	face / reveal	face / reveal	face / top / reveal	face / reveal / stand-off	face / reveal / stand-off
				▶ post fixture	▶ post fixture
Wind resistance class	3	2 – 3	2	2 – 3	2 – 3
Equivalent of Beaufort force → wind speed	6 → 38 – 48 km/h; 24 – 30 mph	5 – 6 → 28 – 48 km/h; 17 – 30 mph	5 → 28 – 37 km/h; 17 – 23 mph	5 – 6 → 28 – 48 km/h; 17 – 30 mph	5 – 6 → 28 – 48 km/h; 17 – 30 mph
Options	<ul style="list-style-type: none"> ▶ sundrive up to max. 250 × 300 cm 			<ul style="list-style-type: none"> ▶ panorama window (only possible with tracfix) ▶ panorama window (only possible with tracfix) 	

Drop-arm Cassette Awning

Marquiselette

Triangular Blind

markilux

markilux 730

Page 30



700 × 250 cm

95 × 95 mm

manual operation

- ▶ hard-wired motor
- ▶ radio-controlled motor
- ▶ smart home

drop arms

80 / 100 / 120 / 150 cm

gas pistons

face / top / reveal

- ▶ wedge-in accro posts

2

5 → 28 – 37 km/h; 17 – 23 mph

markilux 740

Page 32



300 × 300 cm

95 × 95 mm

including protection profile

manual operation

- ▶ hard-wired motor
- ▶ radio-controlled motor
- ▶ smart home

guide tracks

incl. drop arm 60 cm

gas pistons

face / reveal

2

5 → 28 – 37 km/h; 17 – 23 mph

markilux 893

Page 34



400 × 500 cm

Ø 115 mm

hard-wired motor

- ▶ radio-controlled motor
- ▶ smart home

guide tracks

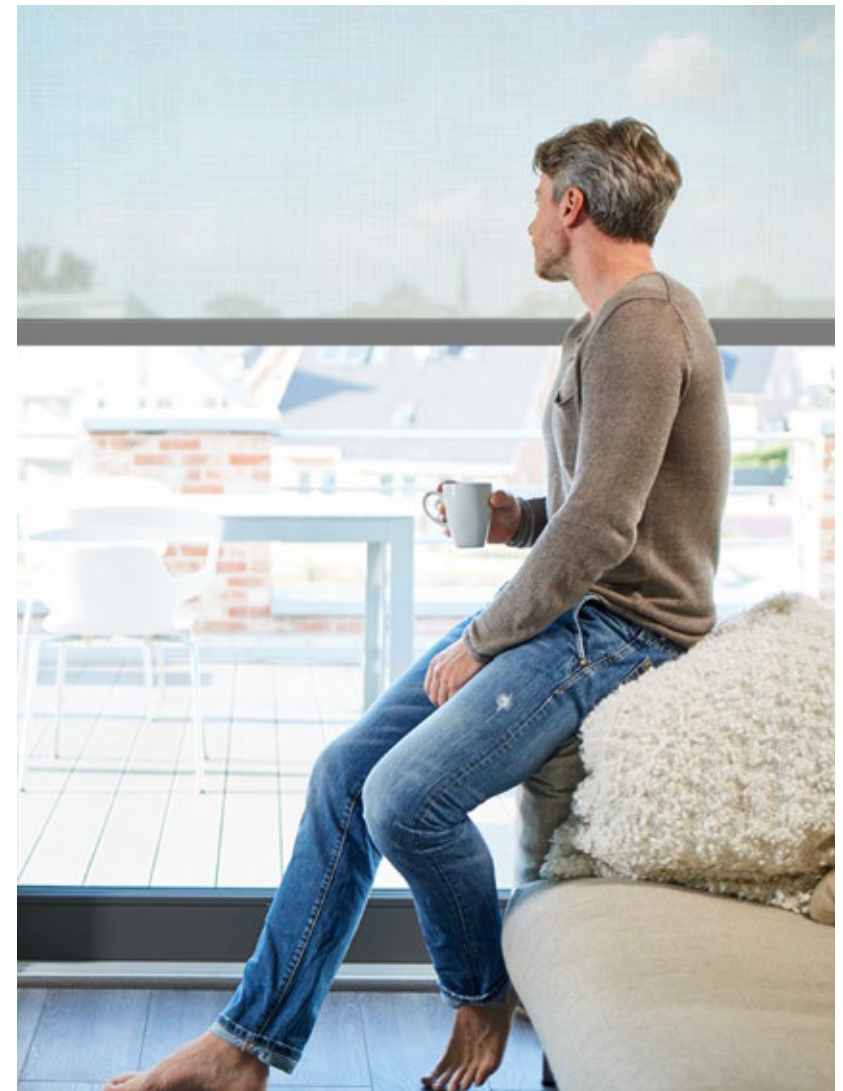
incl. tensioning cables

gas pistons

stand-off

2

5 → 28 – 37 km/h; 17 – 23 mph



Allow yourself to be inspired, enthused, advised...

Every option can be found in the showroom of a markilux specialist dealer near you or at markilux.com

The best under the sun. Create the most alluring shade in the world.

Innovative technology and the pinnacle of quality, have received both acclaim and multiple awards. Made in Germany. Ideas, detailed information, professional advice and all the exquisite markilux awning fabric patterns can be found in your specialist dealer's showroom and at [markilux.com](https://www.markilux.com)



Folding-arm awnings



Pergola awnings



Awning systems



Glass canopy awnings



Vertical roller blinds



Wind and privacy protection